

SCOTLAND'S ROCK ART PROJECT

Social Value and
Community Engagement



Arts & Humanities
Research Council



HISTORIC
ENVIRONMENT
SCOTLAND

ÀRAINNEACHD
EACHDRAIDHEIL
ALBA



SCHOOL OF
SIMULATION AND
VISUALISATION
THE GLASGOW
SCHOOL OF ART

Project Team and Partners

Principal Investigator



Tertia Barnett

Research Assistant



Joana Valdez-Tullett



Maya Hoole

Volunteers



Sarah Scott, Kirsty Lilley

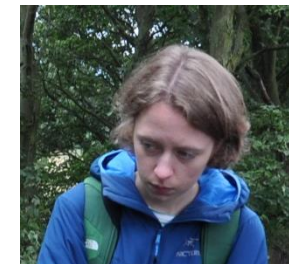
Co-Investigators



Guillaume Robin
Edinburgh University
History, Classic &
Archaeology



Stuart Jeffrey
Glasgow School of Art
SimVis



Project Partners:

NOSAS

Kilmartin Museum

Archaeology Scotland

Scotland's rock art

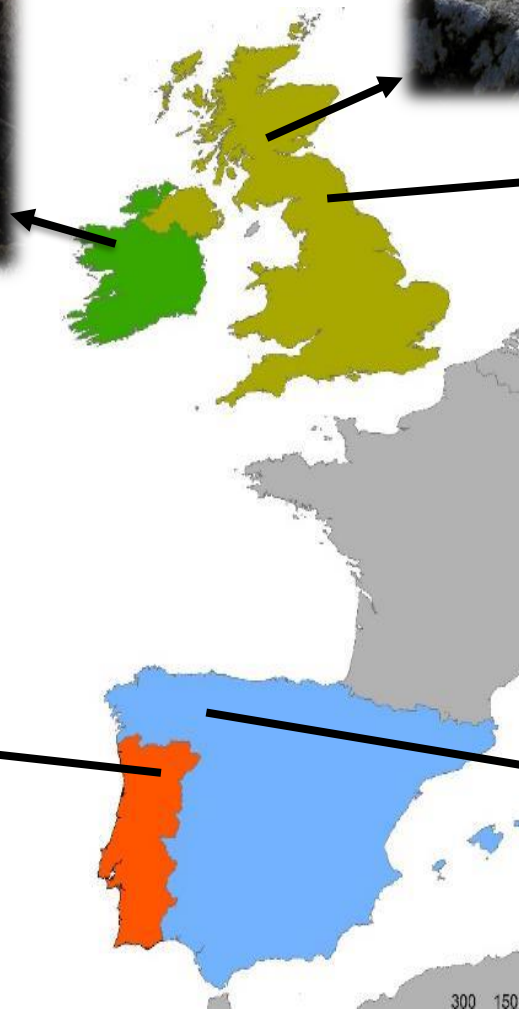
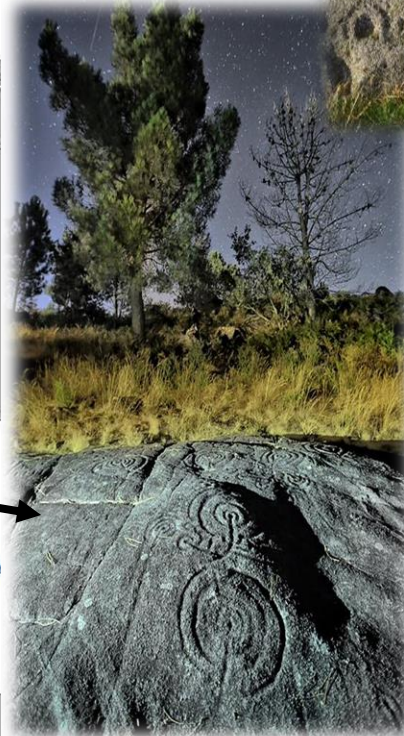
Typically 'abstract' motifs based on cups, rings and grooves, carved on boulders and outcrops in the landscape during the Neolithic

Tormain Hill, Midlothian



Atlantic Rock Art

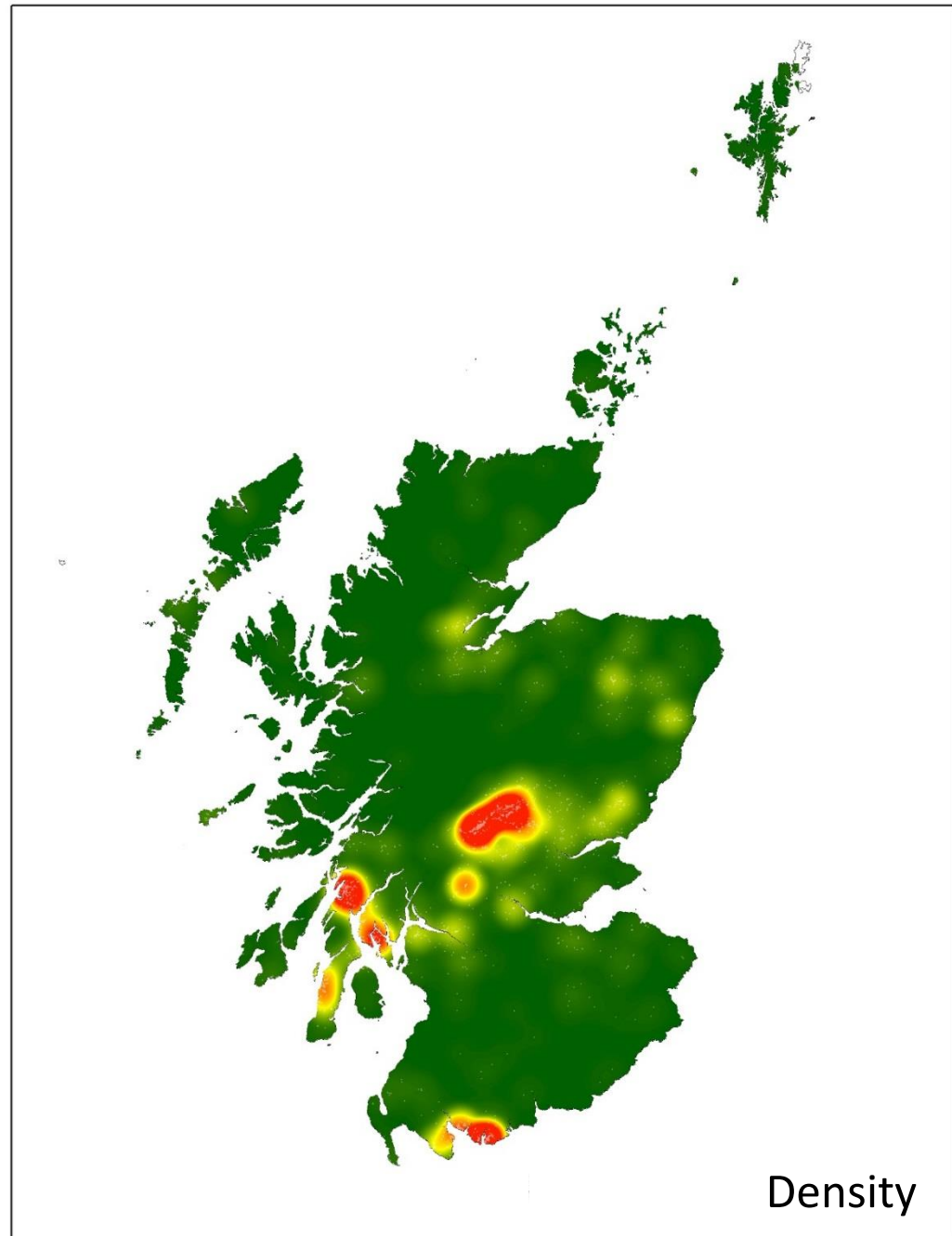
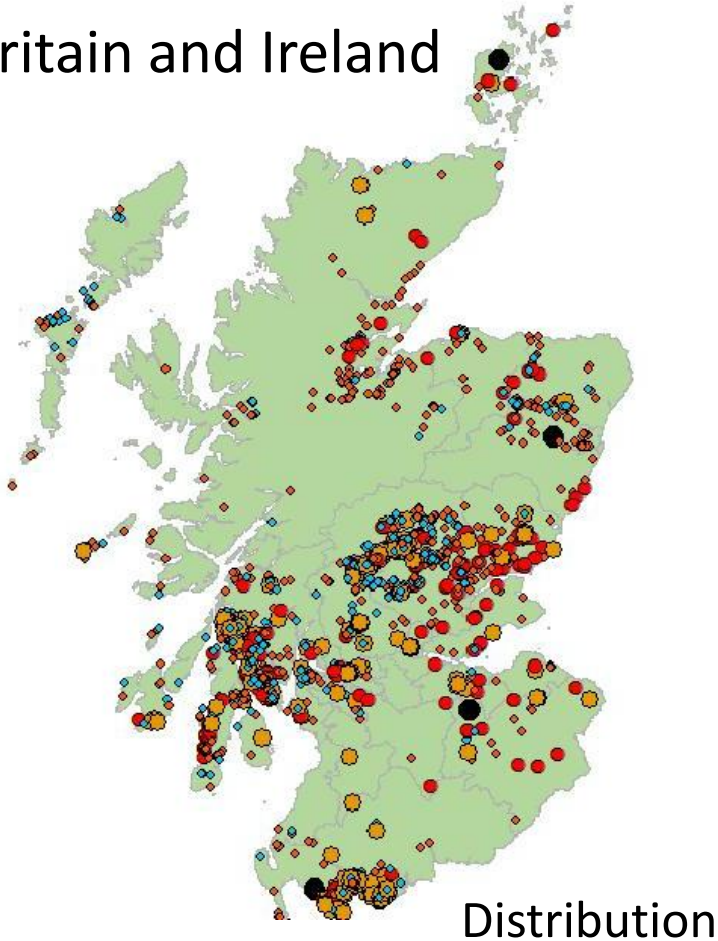
Cup and ring carvings in Europe



Scotland's rock art

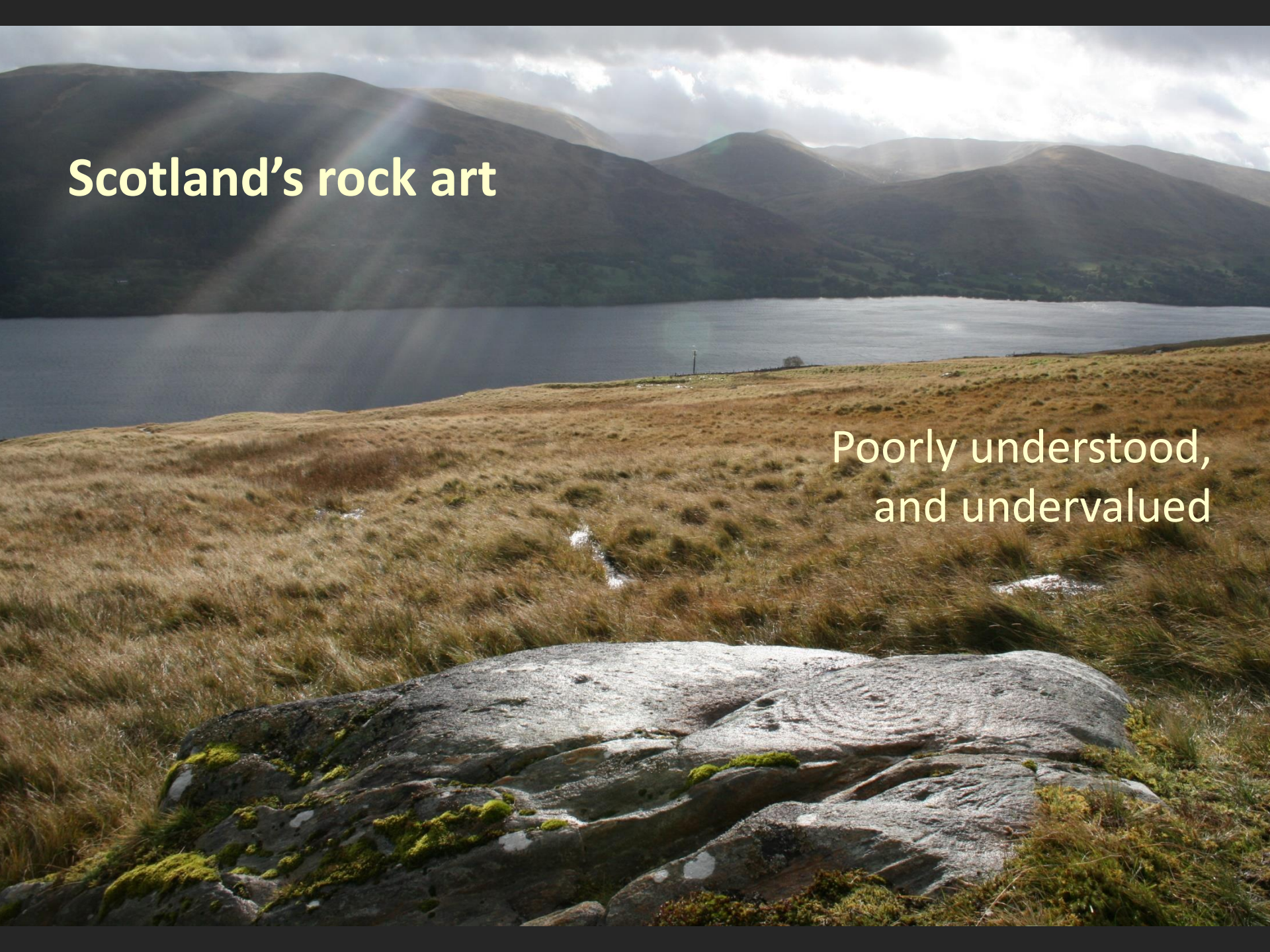
Over 3000 carved rocks
known in Scotland

40% of all known rock art in
Britain and Ireland



Scotland's rock art

Poorly understood,
and undervalued



Scotland's Rock Art Project

Enhancing understanding, awareness and value of Scotland's rock art through community co-production and research



Strachur Team, Glendaruel



Working with 11 trained Community Teams to record Scotland's rock art



Website and Data input system www.rockart.scot



HISTORIC
ENVIRONMENT
SCOTLAND

ÀRAINNEACHD
EACHDRAIDHEIL
ALBA

SCOTLAND'S
ROCK ART

LOGIN/REGISTER

SEARCH DATABASE

MY FOLDER

HOME

ABOUT US ▾

ABOUT ROCK ART ▾

IMAGES ▾

RECORD ▾

RESOURCES ▾

RESEARCH ▾

EVENTS

A large banner image showing a close-up of a rock surface with several circular and spiral rock art carvings. The text 'SCOTLAND'S ROCK ART PROJECT' is overlaid in white.

SCOTLAND'S **ROCK ART** PROJECT

WELCOME

Welcome to the website for the Scotland's Rock Art Project! Around 5000 years ago, people in Scotland carved mysterious symbols on rock surfaces across the landscape. We call these prehistoric carvings 'rock art' and, if we look carefully, we can still see traces of them today. Thousands of prehistoric carvings are known in Scotland, and there may be many more waiting to be discovered. They were clearly important to the people that created them, but we know little about how were they used, or what purpose they served. Scotland's Rock Art Project is working with communities across Scotland to learn more about these enigmatic carvings.

On our website you can find out what we are doing, and how you could get involved. You can search our database for prehistoric carvings in Scotland, and discover more about rock art here and elsewhere in the world.

ROCK ART MAP





HISTORIC
ENVIRONMENT
SCOTLAND

ÀRAINNEACHD
EACHDRAIDHEIL
ALBA

SCOTLAND'S
ROCK ART

MY SCRAP

SEARCH DATABASE

HOME

ABOUT US ▾

ABOUT ROCK ART ▾

IMAGES ▾

RECORD ▾

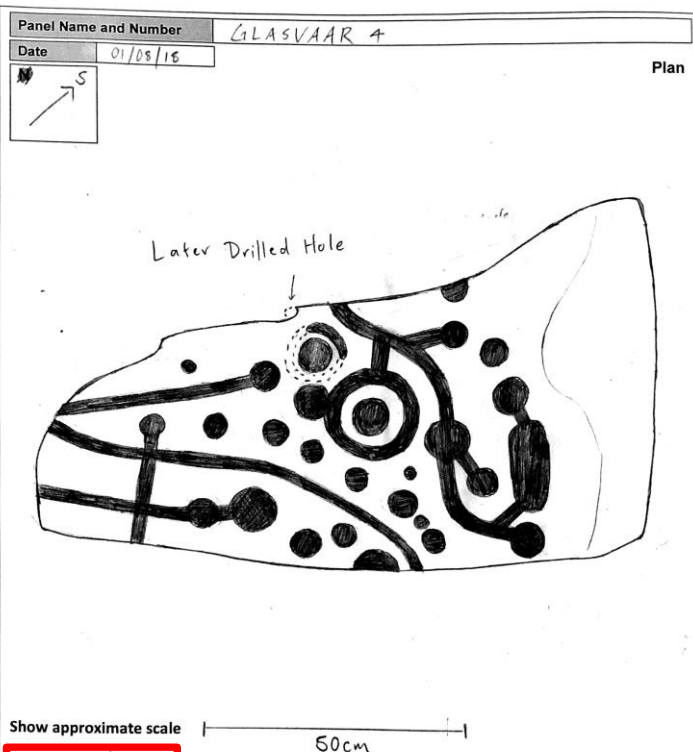
RESOURCES ▾

RESEARCH ▾

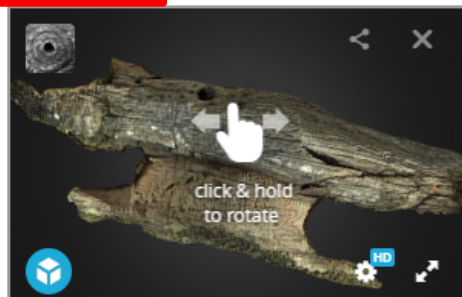
EVENTS

ROCK ART DATABASE

Welcome Tertia Barnett
[Log Out](#)



3D MODEL



The user currently assigned to this panel must release it before you can assign it to yourself

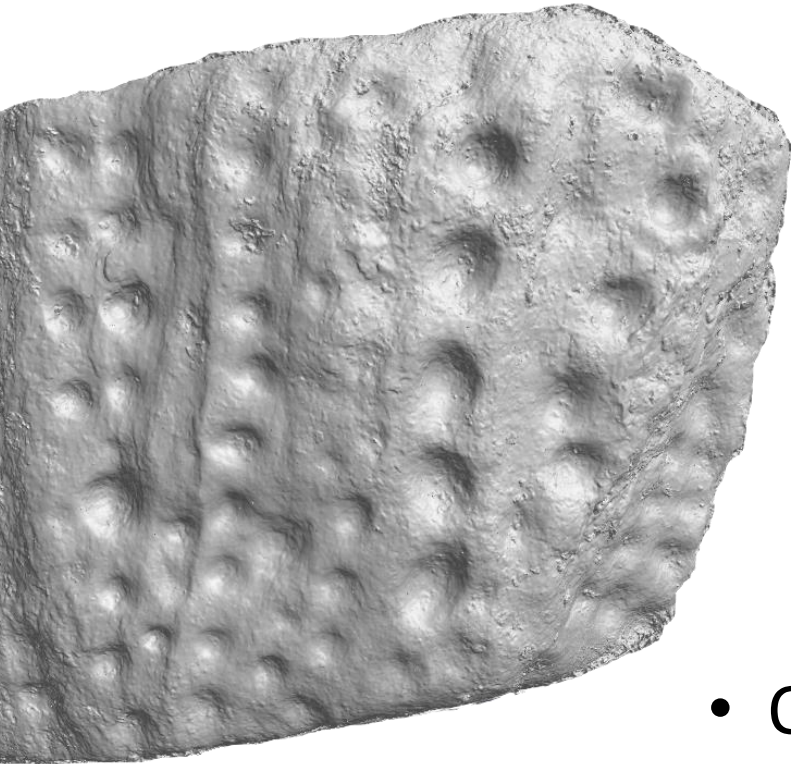
VIEW/PRINT SCRAP DATA

VIEW IMAGES

Enhancing social value of rock art through engagement?



So far...



- 150 people trained
- 900 detailed rock art records co-produced and publicly accessible
- Over 700 3D models co-created and publicly accessible
- 9 focus group discussions and field observations with different community teams

Research Workshop 2

**Cultural heritage social value and
community engagement**

9.45-10.00	Tertia Barnett	Introduction
10.00-10.30	Sian Jones	Valuing the Social
10.30-10.55	Liz Robson	There is no such 'thing' as social value
	Katie Mills	Can weather add value to visitor experiences of stone heritage?
10.55-11.40	Discussion	
11.40-11.55	<i>Break</i>	
11.55-12.20	Chiara Bonacchi	Networked individualism in digital heritage
	Yang Wang	The social inclusive nature of the emotional bonds between people and the historic environment
12.20-13.05	Discussion	
13.05-14.00	Lunch	
14.00-14.30	Gavin MacGregor	Towards common good with common purpose
14.30-14.40	Suzie Thomas	What social values emerge when heritage is difficult or contested?
14.40-15.15	Discussion	
15.15-15.30	<i>Break</i>	
15.30-15.40	Kenny Brophy	Local art for local people
15.40-16.15	Discussion	
16.15-16.20	Final comments	
16.30-18.30	Wine reception	

Cloanlawers 6, Perthshire

